



True Stealth™ Subwoofer (UB0001) Install Guide

Installation Guide

1. Prerequisites and Preparation	1
2. Quick Install Overview.....	1
3. Removing Rail Trim	1
3.1. Left Trim	2
3.2. Right Trim.....	2
4. Removing the Bolts	3
4.1. Rear Bolts	3
4.2. Front Bolts.....	3
5. Adjusting the Wiring.....	4
5.1. Positioning the Seat	4
5.2. Adjusting the Clips.....	4
6. Installing the Subwoofer	5
7. Reinstalling the Seat	6
7.1. If Seat Was Removed	6
7.2. If Seat Was Tilted Back.....	6
7.3. Reinstalling the Bolts	6
7.4. Reinstall Rail Covers.....	7

1. Prerequisites and Preparation

Prerequisites for install:

- A working stereo head unit feeding a signal to an amplifier
- An appropriate amplifier for the subwoofer used
- Appropriate wiring run to the carpet opening under the passenger seat

Tools required for install:

- 13mm Socket Wrench (bolt removal)
 - Both deep socket or ratchet-hole will work
- Torque Wrench (bolt reinstallation)

2. Quick Install Overview

This section provides a very brief overview of the steps. It is not recommended that you use this section as your sole installation instructions. Each section provides detailed information on each step and failure to execute the details could result in a damaged product.

1. Slide the passenger seat forward
2. Remove rear rail trim
3. Remove rear bolts
4. Slide the seat back
5. Remove front bolts
6. Position seat so bottom is accessible
7. Bend in metal clips
8. Fasten wires against the seat bottom with zip ties
9. Attach wires to subwoofer
10. Place box in, widest rail on passenger door side
11. Bring the seat back down
12. Reinstall bolts and rail covers

3. Removing Rail Trim

The first step is to remove the rail covers that cover the bolts to remove the seat.

First, slide the passenger seat all the way forward (Figure 1).



Figure 1

3.1. Left Trim

Next, remove the left rail bezel trim. To do this, slide your hand behind the trim, locate the clip, and squeeze both sides together (Figure 2). Push the clip outward and pop out the edge. Once you have the front of the bezel popped out, slide the bezel towards the rear of the car, it will come off at this point.



Figure 2

3.2. Right Trim

Now, remove the remaining bezel on the right side. To do this, reach to the back of the bezel and pry the trim at the rear away from the bezel by putting your hand around the edge (Figure 3). Then, being careful not to break the bezel, pull it towards the rear of the car.



Figure 3

4. Removing the Bolts

4.1. Rear Bolts

To remove the rear bolts, grab the wrench mentioned at the beginning of the guide and begin removing the bolts (Figure 4). These bolts are on very tight and require a great deal of work to remove. If you're not strong enough, you can try a longer wrench (breaker bar).



Figure 4

4.2. Front Bolts

Next you will want to remove the front bolts. Start by moving up to the front seat and putting the seat all the way back. Then, simply remove the front bolts like the rear bolts. These should also be on firm and will require some work to break free.

5. Adjusting the Wiring

5.1. Positioning the Seat

Start out by moving the seat so you can work with the bottom easily. This can be accomplished two ways: (A) removing the seat from the car, (B) lifting the front of the seat up and leaning it against the back seats. Option A must be done with caution because you could easily scratch your car but, once out, is safe to move around and easy to work with. Option A all requires the removal of all the wires that are attached to the bottom of the seat. Option B is the easiest and, while it did not hurt anything during our installs you may be concerned with the rails digging into your carpet. Option B does not require the removal of any wires. However, one mid-wire clip holding a wire to a metal bracket must be unclipped. This clip can be reinstalled later or left off.

5.2. Adjusting the Clips

Once you have the bottom of the seat in an accessible location, it is time to start bending the metal clips (Figure 5). Push the metal clips on right side in (side nearest the driver's seat). Don't push excessively. You simply want to bend the clips gently out of the way. The further you can get them out of the way, the better the seat will fit without any interference. However, at the same time, you do not want to break the clips. Use caution and common sense.

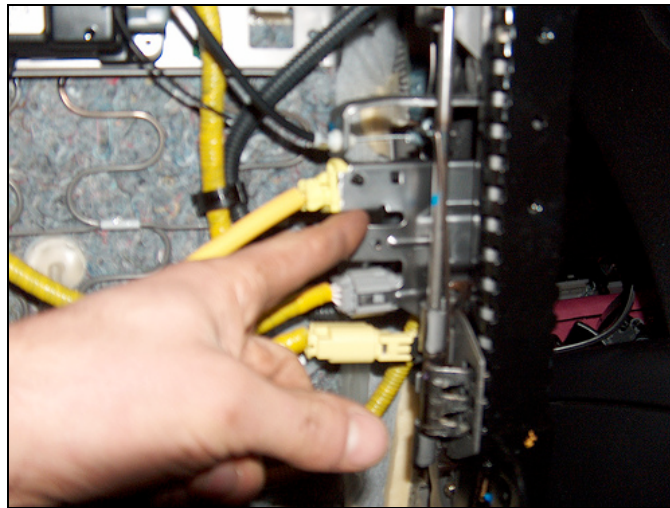


Figure 5

Now bend the remaining clip located toward the rear of the seat (Figure 6). You will want to bend this all the way to the bottom of the seat.

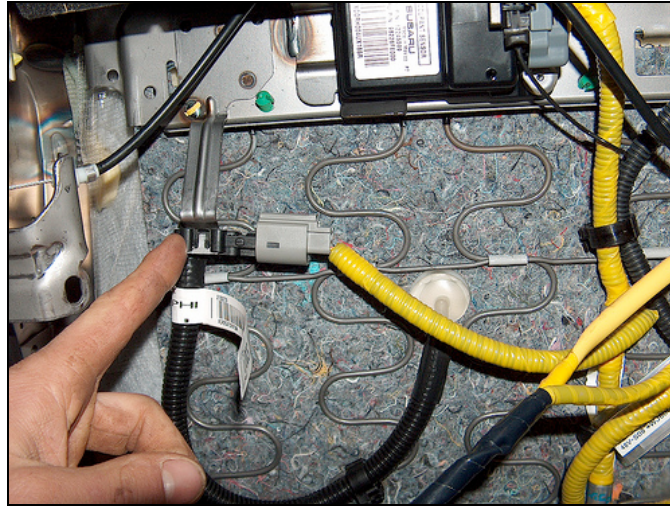


Figure 6

6. Installing the Subwoofer

Now that the seat is prepared for the subwoofer, it is time to put it in. First, connect the wires from your amplifier to the appropriate terminal (our box uses the standard red is positive, black is negative terminals). Now, lay the box in between the seat posts with the widest rail groove closest to the passenger door and the speaker closest to the center console (Figure 7). Once the box is laid in, push it firmly toward the front of the car, this will help ensure clearance for the rear rail covers when reinstalling the seat.

Please note: the subwoofer box in this image is an old prototype, not the current subwoofer. This box fires upward, the box you received fires downward and you will not see the subwoofer as in the image below. However, the long and short sides remain the same.



Figure 7

At this point, it is advisable to test the subwoofer and its wired connections (provided you have the rest of the system installed). Make sure you have your amplifier setup properly before performing the test.

7. Reinstalling the Seat

Now that your subwoofer is in place, it is time to get the seat back on. Extra caution is needed during this step for two reasons. The first is that dropping the seat or placing it on top of the box incorrectly could damage the speaker. The second reason is that the seats weight and pressure from mounting are what hold the subwoofer down (not that it could come out) and prevent it from sliding around.

7.1. If Seat Was Removed

If you removed the seat from the car earlier (see section 5.1 Positioning the Seat) put it back in exercising extreme caution. As you're putting it back in, rest the rear rails first, reattach all the wires, bring the seat down some, reattach the wire clip, and then slowly bring the front rails down into position.

7.2. If Seat Was Tilted Back

If the seat was simply tilted back earlier, slowly bring the seat down, reattaching the wire clip about half way. Make sure to pull the seat forward as you bring it down if the mounting holes do not clear the floor bump.

7.3. Reinstalling the Bolts

Before bolting the seat on, make sure the thick black cable ends up in the wire gutter while reattaching the seat (Figure 8).



Figure 8

We recommend reinstalling the bolts in the opposite order they were removed. It is easier to get everything situated properly if the front bolts are installed half-way then the rear bolts

are installed. This gives you some room to move the seat around a little when we move to the back and are trying to line up the rear bolt holes.

With the front bolts installed partially, move to the back seat. At this point, you may notice that the seat rail is resting on the box, this is intended as this mounts the box. You may want to lift the seat very slightly and give the box a good push forward at this point to make sure it did not slide back while dropping the seat. Install the left bolt first and then the right bolt. Once you are sure the seat is mounted properly, torque these bolts down to Subaru torque specifications for your vehicle (shop manual says 39 ft-lbs).

7.4. Reinstall Rail Covers

Simply reinstall the rail covers and you are finished.

The left rail cover can be a bit tricky. Push it flush against the center console wall while holding the part with the clip outward (closest to the box). Slide it forward and once you are sure the clip is in place, snap the clip in. The right rail can be pushed almost straight in, snapping the two prongs around the seat mount.